

1. Turn off the power

First make sure the power is turned off. The safest way to do this is to switch the large red power button to 'off' on the fuse box.

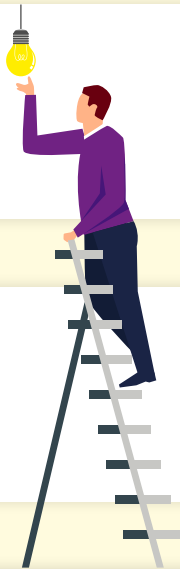


5. Replace the bulb with the same wattage

Depending on the type, push up and turn it clockwise until it locks into place or keep gently twisting clockwise until it won't go any further.

2. Let the bulb cool

Allow the bulb to cool before touching it.



6. Turn the power back on and switch on the light

3. Use a ladder to safely reach the bulb

7. Dispose of the old bulb

Use something to wrap the old bulb for safety.

4. Remove bulb

The way you do this will depend on whether your bulb has a bayonet mount or a screw fitting:



Bayonet Mount (two prongs, standard in the UK):

Grasp the bulb lightly but firmly, push upwards gently and turn anticlockwise until it is released from the socket.



Screw Fitting (most common in Europe):

Keep gently twisting anticlockwise until the bulb comes loose from the socket.

As always, safety is crucial when working with electrical or wiring faults:

Remember:

- » Check the wattage on the used bulb and replace it with a bulb of the same wattage
- » Dispose of the bulb well out of the reach of children
- » Don't put your fingers in the exposed light socket